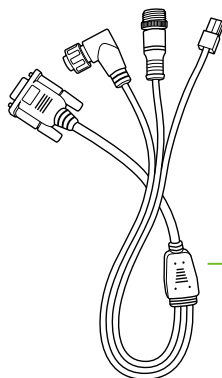


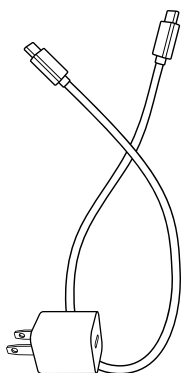
TECH TOOL QUICK GUIDE



TECH TOOL

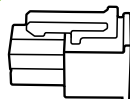
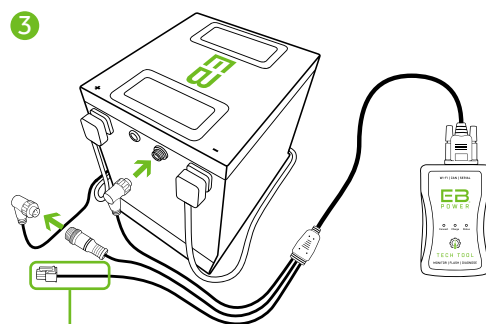
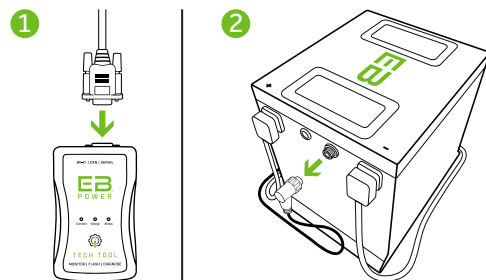


MAIN
COMMUNICATION
HARNESS



CHARGING
HARNESS

GETTING CONNECTED



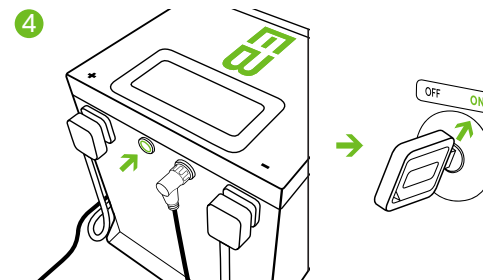
4-Pin Serial Communication Connection

This connection is vehicle-specific. Usage and placement may vary depending on the application.

For correct connection procedures, please refer to the **Connection Guide** within the web interface/app after finished with this Quick Guide.

INCORRECT USE OF THIS CONNECTION MAY RESULT IN DAMAGE TO THE VEHICLE AND/OR TECH TOOL.

Continued on next page. ➔



— OR —

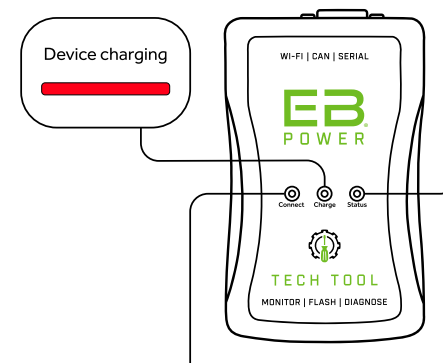


Additional help
resources and more
product information



LED READOUT

No power to device	OFF
Insufficient power	
Device is powered ON	
Detecting BMS	
Detecting vehicle	
OTA update check failed	
OTA update in progress	
OTA update available	



No power to device	OFF
No smart device connected and no internet connection	
Smart device connected but no internet connection	
Internet connected	
Smart device and internet connected	
Device needs charging	

EB
POWER